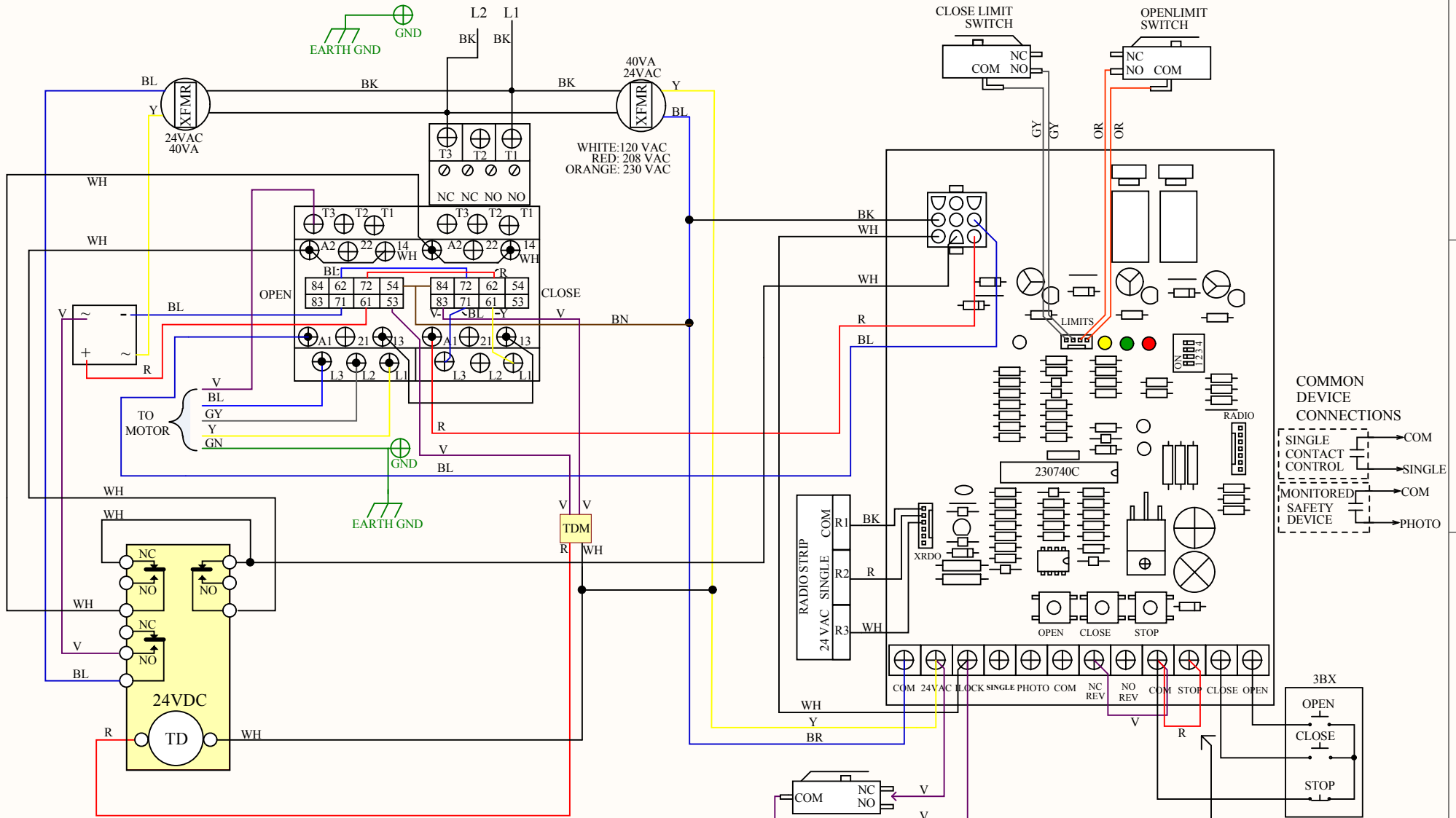


**INCOMING POWER**



**SETTING OPERATOR MODE SWITCHES**

OPERATING MODE	SWITCH 1	SWITCH 2	SWITCH 3	SWITCH 4	
C2	OFF	OFF	OFF	OFF	CONSTANT CONTACT CLOSE
B2	ON	OFF	OFF	OFF	MOMENTARY PRESSURE, CLOSE/OPEN
D1	OFF	ON	OFF	OFF	CONSTANT PRESSURE, OPEN/CLOSE
E2	ON	ON	OFF	OFF	CONSTANT PRESSURE CLOSE, W/ ROLL BACK
TS	OFF	OFF	ON	OFF	TIMER TO CLOSE
T	ON	OFF	ON	OFF	STOP OR SAFETY DEACTIVATES TIMER

**NOTE:** MONITORED SAFETY DEVICE REQUIRED FOR MOMENTARY PRESSURE TO CLOSE. EX MODELS REQUIRE SM102 + EDGE.

**NOTE:** WIRING MUST BE SUITABLE FOR HAZARDOUS LOCATIONS

Title: <b>EX-6501 DB2</b>		V.E. Power Door 140 Enjay Blvd. Brentwood NY, 11706 
Revision: 1	Voltage: 120/240 1Ø	
Drawn by: ML	Date: 5/15/2017	
USA		
© Copyright PowerMaster 2017 No portion of this diagram may be reproduced without written permission of the manufacturer.		